



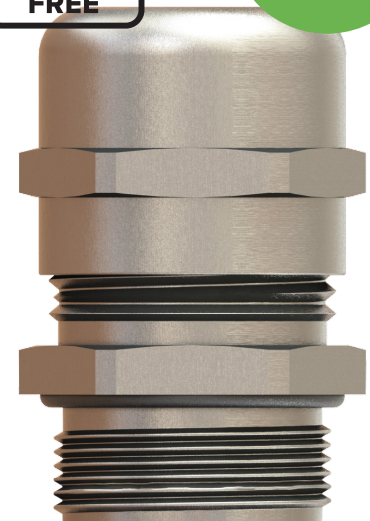
EMC 4 Cable Glands Lead-Free Brass

EMC 4 cable glands with open moving spring contact

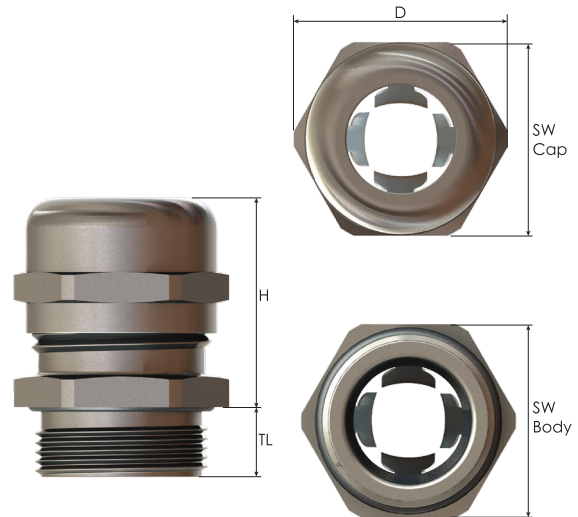
- Vibration proof EMC performance.
- Lead-free.
- Long-lasting contact by high definition contact spring.
- Moving spring contact offers reduced risk of sheath damage.
- Easy assembly and disassembly of cable. Spring closes and opens according to fastening of the cap.
- Easy movement of cable as long as not fastened.
- High quality strain relief and sealing, reliable performance for EMC applications.
- Up-to-date international approvals.

Technical Details		
Material	Body, Cap	Lead-free EcoBrass Nickel plated
	Seal	CR (Chloroprene)
	Clamping Insert	PA 6 (Polyamide 6)
	Contact Spring	Special Copper Alloy
	O-Ring	NBR
Ingress Protection Rating	IP 68 - 5 Bar, 30 min	
Flammability	V2 according to UL94	
UL Environmental Rating	TYPE 4X, 12, 13 acc. to UL 50E	
Operating Temperature	Permanent	-20 °C to +100 °C
	Intermittent	-40 °C to +150 °C
Thread Type	<ul style="list-style-type: none"> • Metric EN 60423 • NPT ANSI B1.20.1 	
Cable Type	Shielded	
Accessories	<ul style="list-style-type: none"> • EMC Lock nuts • Dome plugs • Gaskets (Washers) 	
	<ul style="list-style-type: none"> • In compliance with DIN EN 62444. • We recommend the use of lock nuts and gaskets to ensure IP rating for rough surfaces or through holes. • Some approvals do not cover all sizes. • O-ring available in Metric thread as a standard. For NPT threads O-ring available upon request. • Accessories must be ordered separately. • Other lock nut types also available upon request. 	
	Remarks	
Approvals	Certificate Number	Standards
	40039349	In progress
	E-199260	In progress

For details of approvals, see our website.



EMC 4 Cable Glands Lead-Free Brass



Thread Type **METRIC** acc. to EN 60423

Outer Thread Size (Male)	Clamping Range Ø min-max mm	Shield Diameter Ø min-max mm	Outer Thread Length TL mm	Spanner Width		Outer Ø D mm	max. Height H mm		Part Number
				Cap SW Cap mm	Body SW Body mm				
M12x1,5	3,0 - 6,5	2,0 - 5,0	6,0	14	14	15,5	30,0	BMEM-ES(M12T) (LF)	
M16x1,5	5,0 - 10,0	3,5 - 8,0	6,0	20	20	22,0	35,0	BMEM-E1(M16T) (LF)	
M20x1,5	6,0 - 12,0	4,5 - 10,0	6,0	22	22	24,5	33,5	BMEM-E2S(M20T) (LF)	
M20x1,5	7,5 - 14,0	5,5 - 11,5	8,0	24	24	26,8	41,5	BMEM-E2(M20T) (LF)	
M25x1,5	10,0 - 18,0	7,0 - 14,0	8,0	30	30	33,0	44,5	BMEM-E3(M25T) (LF)	
M32x1,5	16,0 - 25,0	12,0 - 20,0	9,0	40	40	44,5	55,0	BMEM-E4(M32T) (LF)	
M40x1,5	22,0 - 32,0	18,0 - 27,0	9,0	50	50	55,5	62,5	BMEM-E5(M40T) (LF)	
M50x1,5	30,0 - 38,0	26,0 - 34,0	9,0	58	58	64,0	74,0	BMEM-E6(M50T) (LF)	
M63x1,5	34,0 - 44,0	30,0 - 40,0	14,0	64	68	75,0	60,0	BMEM-E7(M63T) (LF)	

Thread Type **NPT** acc. to ANSI B1.20.1

Outer Thread Size (Male)	Clamping Range Ø min-max mm	Shield Diameter Ø min-max mm	Outer Thread Length TL mm	Spanner Width		Outer Ø D mm	max. Height H mm		Part Number
				Cap SW Cap mm	Body SW Body mm				
NPT 1/4"	3,0 - 6,5	2,0 - 5,0	11,5	14	15	16,5	30,0	BNEM-ES(NPT1/4") (LF)	
NPT 3/8"	5,0 - 10,0	3,5 - 8,0	11,5	20	20	22,0	35,0	BNEM-E1(NPT3/8") (LF)	
NPT 1/2"	7,5 - 14,0	5,5 - 11,5	15,0	24	24	26,8	41,5	BNEM-E2(NPT1/2") (LF)	
NPT 3/4"	10,0 - 18,0	7,0 - 14,0	15,0	30	30	33,0	43,5	BNEM-E3(NPT3/4") (LF)	
NPT 1"	16,0 - 25,0	12,0 - 20,0	20,0	40	40	44,5	54,0	BNEM-E4(NPT1") (LF)	
NPT 1 1/4"	22,0 - 32,0	18,0 - 27,0	20,0	50	50	55,5	63,0	BNEM-E5(NPT1 1/4") (LF)	
NPT 1 1/2"	30,0 - 38,0	26,0 - 34,0	22,0	58	58	64,0	73,0	BNEM-E6(NPT1 1/2") (LF)	
NPT 2"	34,0 - 44,0	30,0 - 40,0	22,0	64	68	75,0	73,0	BNEM-E7(NPT2") (LF)	

