



# SNAP-IN GLANDS

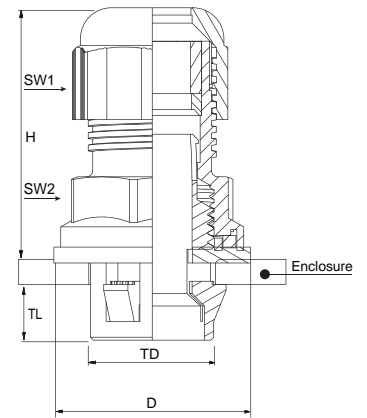
Simplifying Installation  
with astonishing time savings

**bimed**

# Plastic cable glands, front-side assembly, without thread

- Specially designed cable glands - easy to assemble to housings without threaded holes.
- Easy assembly: push cable gland and turn body clockwise - insert cable - tighten cap.
- Perfectly fit to wall thickness 0,5 mm to 4,0 mm.
- High quality strain relief and sealing, reliable performance for standard industrial applications.
- Easy disassembly (with separate tool).

Technical Details		
Material	Body	PA 6 (Polyamide 6)
	Lower-Body	PA 6 (Polyamide 6)
	Cap	PA 6 (Polyamide 6)
	Seal	CR (Chloroprene Rubber)
Flammability	Washer	CR (Chloroprene Rubber)
	V2	acc. to UL94
Protection Class	IP 68 - 5 Bar, 30 min	
	IP 66	
Operating Temperature	Permanent	-20 °C to +100 °C
	Intermittent	-30 °C to +150 °C
Approvals	File Number	Standard
	VDE	40040031 acc. to DIN EN 62444
Accessories	UV	SERCOVAM RES 107572 acc. to UL514B §8.26.7
		<ul style="list-style-type: none"> <li>• Dome plugs</li> <li>• Reducing seals</li> <li>• Flat cable seals</li> <li>• Multihole seals</li> <li>• Gaskets</li> <li>• Disassembly tool</li> </ul>
Remarks	<ul style="list-style-type: none"> <li>• Different sealing types available.</li> <li>• Manufactured according to DIN EN 62444/50262.</li> <li>• We recommend the use of gaskets to ensure IP rating for rough surfaces or through holes.</li> <li>• Some approvals do not cover all colours or sizes.</li> <li>• Note: Applications of most cable glands don't require same parameters applied to tests. For applications strictly acc. to the approval definitions please consult data sheet.</li> </ul>	



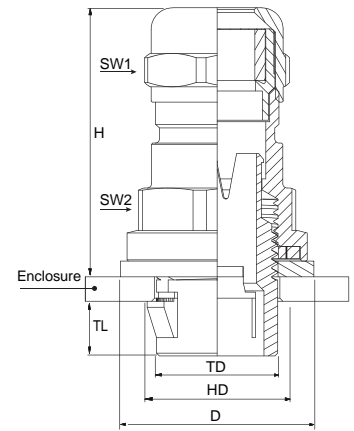
w/o thread	
for wall thickness	0,5 - 4,0 mm

Hole Size Ø mm	Clamping Range Ø min-max mm	Clamping Range		TL mm	TD mm	HD mm	SW		D mm	max. H mm	Part Number			Packing Unit
		Double seal Ø min-max mm	Outer seal Ø min-max mm				Cap mm	Body mm			RAL 7035			
											light grey	grey	black	
M16	5,0 - 10,0	-	-	9	16	16,2 - 16,4	22	22	26,5	42,4	BMOS-11	BMOS-01	BMOS-21	100
	-	3,0 - 7,0	5,0 - 10,0								BMOS-DS-11	BMOS-DS-01	BMOS-DS-21	
M20	6,0 - 12,0	-	-	9	20	20,2 - 20,4	24	24	30,3	41,5	BMOS-12	BMOS-02	BMOS-22	50
	-	3,0 - 7,0	6,0 - 12,0								BMOS-DS-12	BMOS-DS-02	BMOS-DS-22	
M20E	7,0 - 13,0	-	-	9	20	20,2 - 20,4	25	25	30,3	42,1	BMOS-EU-12	BMOS-EU-02	BMOS-EU-22	50
	-	3,0 - 7,0	7,0 - 13,0								BMOS-EU-DS-12	BMOS-EU-DS-02	BMOS-EU-DS-22	
M25E	11,0 - 17,0	-	-	9	25	25,2 - 25,4	29	29	36,3	43,7	BMOS-EU-13	BMOS-EU-03	BMOS-EU-23	25
	-	8,0 - 13,0	11,0 - 17,0								BMOS-EU-DS-13	BMOS-EU-DS-03	BMOS-EU-DS-23	
M32E	15,0 - 21,0	-	-	9	32	32,2 - 32,4	36	36	43,2	50,1	BMOS-EU-14	BMOS-EU-04	BMOS-EU-24	25
	-	11,0 - 16,0	15,0 - 21,0								BMOS-EU-DS-14	BMOS-EU-DS-04	BMOS-EU-DS-24	

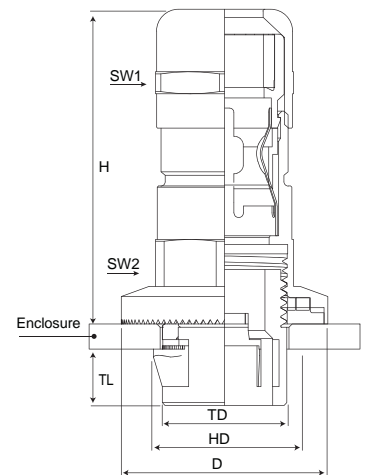
# Brass cable glands, front-side assembly, without thread

- Specially designed cable glands - easy to assemble to housings without threaded holes.
- Easy assembly: push cable gland and turn body clockwise - insert cable - tighten cap.
- Perfectly fit to wall thickness 0,5 mm to 4,0 mm.
- High quality strain relief and sealing, reliable performance for standard industrial applications.
- Easy disassembly (with separate tool).

Technical Details			
Material	Body	Brass, Nickel plated	
	Lower Body	PA 6 (Polyamide 6)	
	Cap	Brass, Nickel plated	
	Seal	CR (Chloroprene Rubber)	
	Clamping Insert	PA 6 (Polyamide 6)	
	Washer	CR (Chloroprene Rubber)	
	Only for EMC type	Contact Spring	Special Copper Alloy
	Flammability	V2	acc. to UL94
	Protection Class		IP 68 - 5 Bar, 30 min
			IP 66
Operating Temperature	Permanent	-20 °C to +100 °C	
	Intermittend	-30 °C to +150 °C	
Approvals	File Number	Standard	
	UV	SERCOVAM RES 107572	acc. to UL514B §8.26.7
Accessories		<ul style="list-style-type: none"> <li>• Dome plugs</li> <li>• Reducing seals</li> <li>• Flat cable seals</li> <li>• Multihole seals</li> <li>• Gaskets</li> <li>• Disassembly tool</li> </ul>	
	<b>Remarks</b>		
	For Standard type	<ul style="list-style-type: none"> <li>• Different sealing types available.</li> <li>• Manufactured according to DIN EN 62444/50262.</li> <li>• We recommend the use of gaskets to ensure IP rating for rough surfaces or through holes.</li> </ul>	
	For EMC type	<ul style="list-style-type: none"> <li>• For cable bending protection.</li> <li>• Specially designed EMC protective cable glands.</li> <li>• Long-lasting contact by high definition contact spring.</li> <li>• Easy assembly: install cable gland - prepare cable sheath - insert cable - tighten cap.</li> <li>• High quality strain relief and sealing, reliable performance for EMC applications.</li> </ul>	



Hole Size Ø mm	Clamping Range Ø min-max mm	Clamping Range		TL mm	TD mm	HD mm	SW		D mm	max. H mm	Part Number	Packing Unit
		Double seal Ø min-max mm	Outer seal Ø min-max mm				Cap mm	Body mm				
M16	5,0 - 10,0	-	-	9	16	16,2 - 16,4	20	20	28,3	60,6	BBOS-01	100
	-	3,0 - 7,0	5,0 - 10,0								BBOS-DS-01	
M20	6,0 - 12,0	-	-	9	20	20,2 - 20,4	22	22	32,3	60,0	BBOS-02	50
	-	3,0 - 7,0	6,0 - 12,0								BBOS-DS-02	
M20 EMC	6,0 - 12,0	-	-		20	20,2 - 20,4	22	22	32,0	64,5	BMEOS-E2S(T)	50

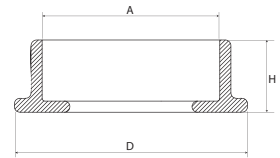


# Tool to disassemble "push and tighten glands"

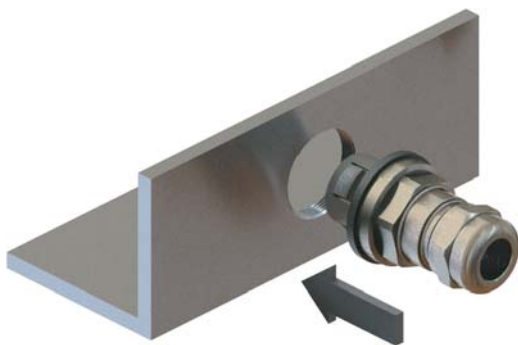
- Tool to disassemble "push and tighten glands"

Technical Details				
Material	Plastic			

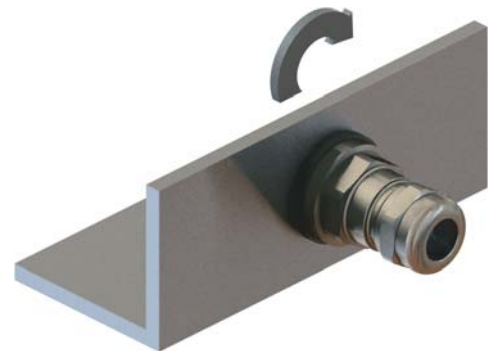
Part Number	(A) Hole Size Ø mm	(D) Hole Size Ø mm	H mm	Packing Unit
BEX-16	16	26	13	10
BEX-20	20	30	13	10
BEX-25	25	35	13	10
BEX-32	32	42	13	10



## Assembling



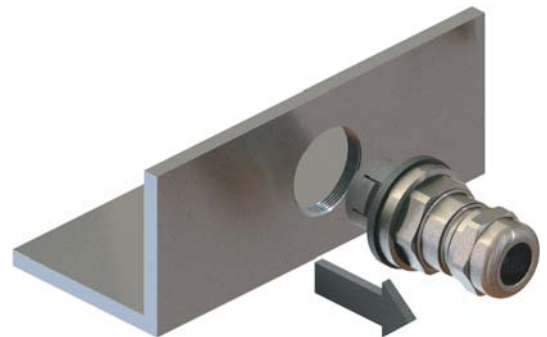
Push  
And  
Tighten



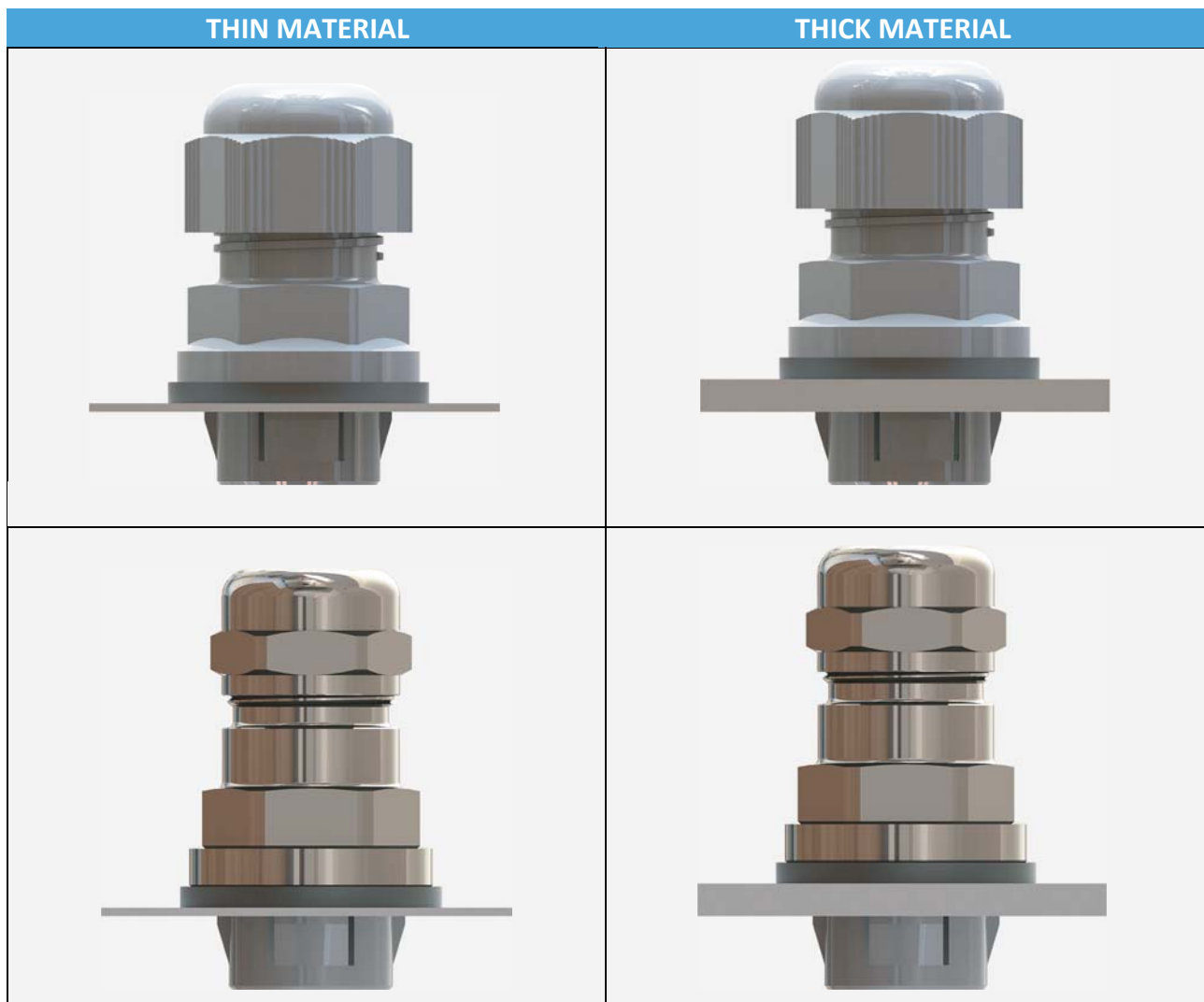
## Disassembling



Push  
And  
Collect



- Neither locknuts nor threaded holes are required
- No tools required for installation
- Push cable gland and turn body clockwise
- Standard M 16 and M 32 through hole dimensions
- Installation in tight spaces
- Installation where no access to rear (locknut side)
- Hexagon of body and cap are same SW
- PAT glands perfectly fit from 0,5 mm to 4,0 mm thick material
- IP 66/IP 68 5bar
- Easy disassembly (with separate tool)



New concept with

- Cable, fitting elements, for easy and quick applications.
- The cable glands and plugs can be mounted an non threaded enclosures directly from outside.
- It is not necessary to reach the back of enclosure wall
- A simple Push And Tighten operation is sufficient for mounting the device.

# bimed

**TEKNIK ALETLER SANAYI VE TICARET A.S.**

TURKEY / Head Office and Factory  
Bakir ve Pirinc Sanayi Sitesi, Orkide Caddesi Nr.15  
34524 Beylikduzu ISTANBUL -TURKEY  
Telephone: +90.212.875 73 76  
Telefax: +90.212.875 70 52  
bimedteknik@bimedteknik.com  
www.bimedteknik.com

GERMANY  
Liebknechtstr. 33  
70565 Stuttgart GERMANY  
Telephone: +49 (0)711 7811-553  
Telefax: +49 (0)711 7811-555  
kk@bimedteknik.de

NORTH AMERICA  
44 Ambleside Ave.  
Toronto Ontario M8Z 2H7 CANADA  
Telephone: 1 (416) 354 2537  
Telefax: 1 (416) 354 2537  
rk@bimedteknik.com

EGYPT  
The 47th building, 4th Floor, Office 417 ,  
North 90 Street, Section 1/5 th Settlement  
New Cairo, 11835 EGYPT  
Telephone: +202 25032847  
Telefax: +202 25032801  
millad@bimedteknik.com